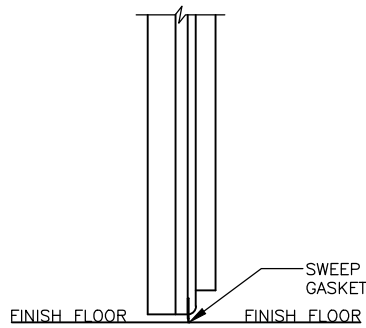
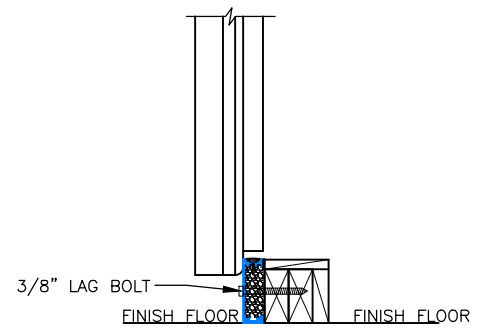


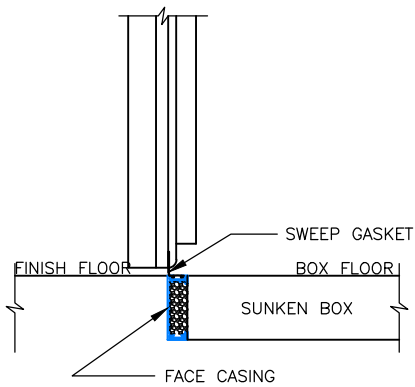
① SCALE: 1" = 1'-0"



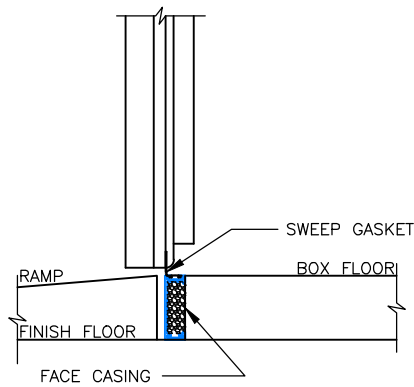
② SCALE: 1" = 1'-0"



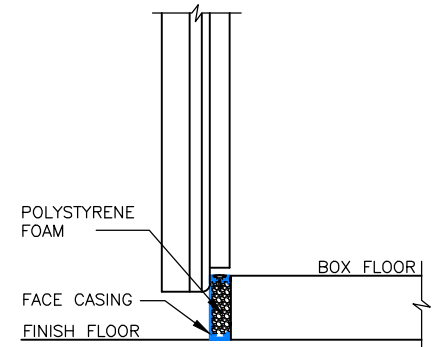
③ SCALE: 1" = 1'-0"



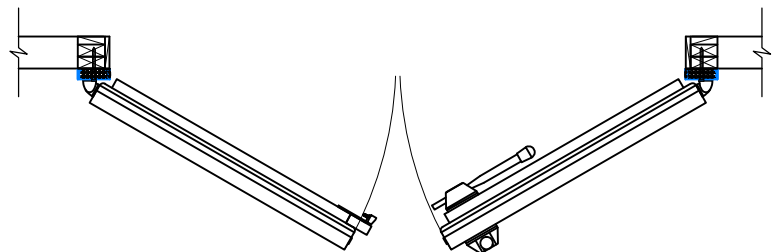
④ SCALE: 1" = 1'-0"



⑤ SCALE: 1" = 1'-0"



⑥ SCALE: 1" = 1'-0"



⑦ SCALE: 1/2" = 1'-0"

INDEX OF CONDITIONS - Page 1/4

**Double Swing Doors with Face Casings**

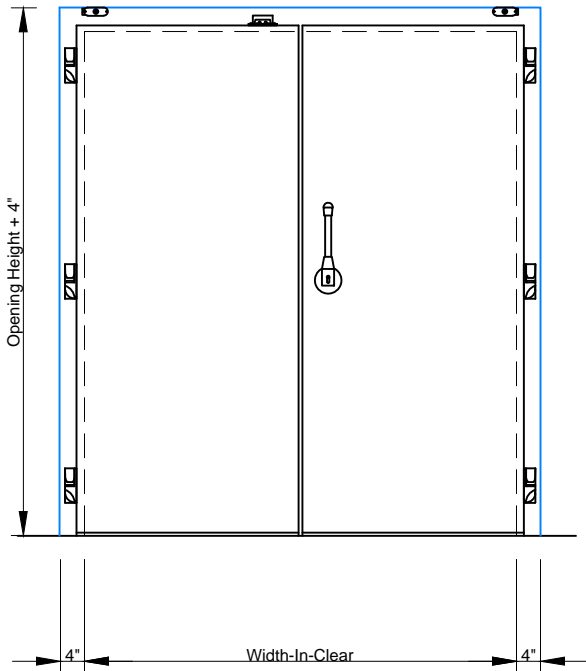
**Model EFD-DSD-1**

Bullet Hinges

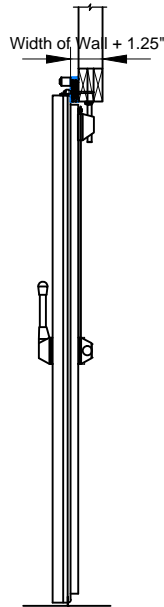
Rotary Compression Latch with Multi-Point Latching

- ① HEAD - SWING DOOR
- ② SILL DETAIL - SWEEP BOTTOM SWING DOOR
- ③ SILL DETAIL - HIGH SILL WITH STEP OVER
- ④ SILL DETAIL - HIGH SILL WITH SUNKEN BOX FLOOR
- ⑤ SILL DETAIL - HIGH SILL WITH REMOVABLE RAMP
- ⑥ SILL DETAIL - HIGH SILL
- ⑦ JAMB - DOUBLE SWING DOOR

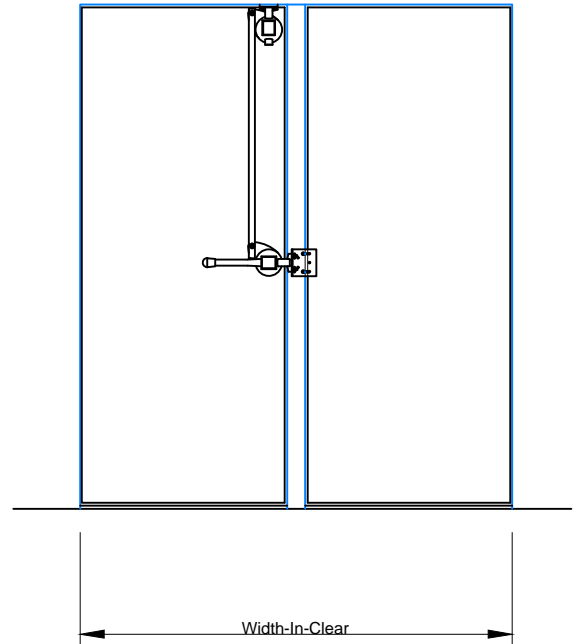




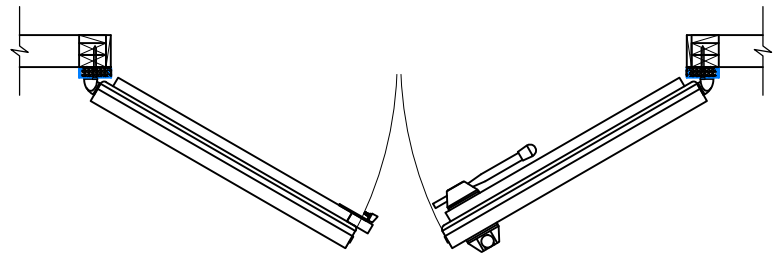
⑧ SCALE: 3/8" = 1'-0"



⑨



⑩ SCALE: 3/8" = 1'-0"



⑪ SCALE: 1/2" = 1'-0"

- ⑧ ELEVATION - SWEEP BOTTOM SWING DOORS (EXTERIOR)
- ⑨ SECTION - SWEEP BOTTOM SWING DOOR
- ⑩ ELEVATION - SWEEP BOTTOM SWING DOORS (INTERIOR)
- ⑪ JAMB - DOUBLE SWING DOORS

SWEEP BOTTOM - Page 2/4

**Double Swing Doors with Face Casings**

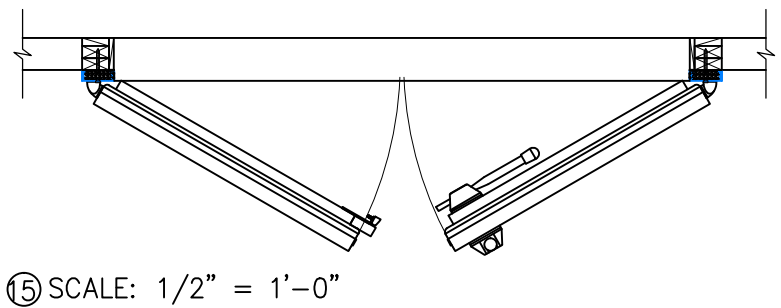
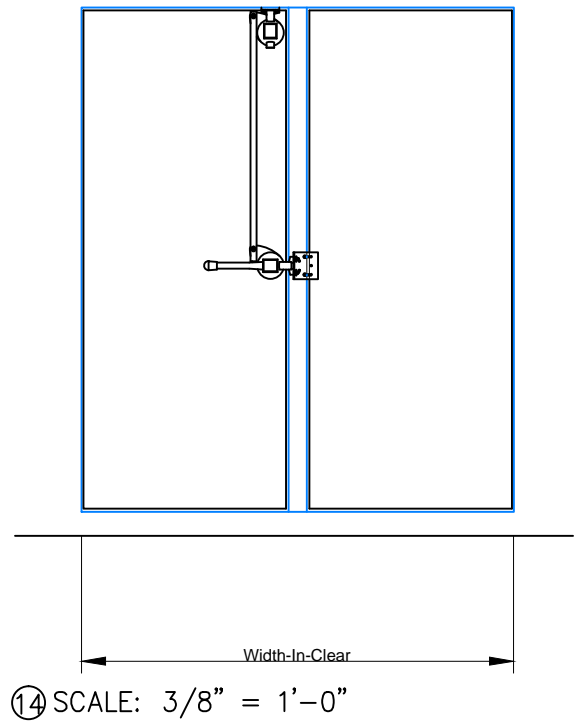
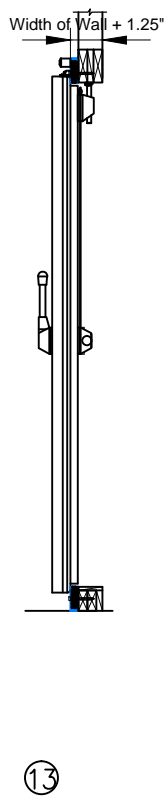
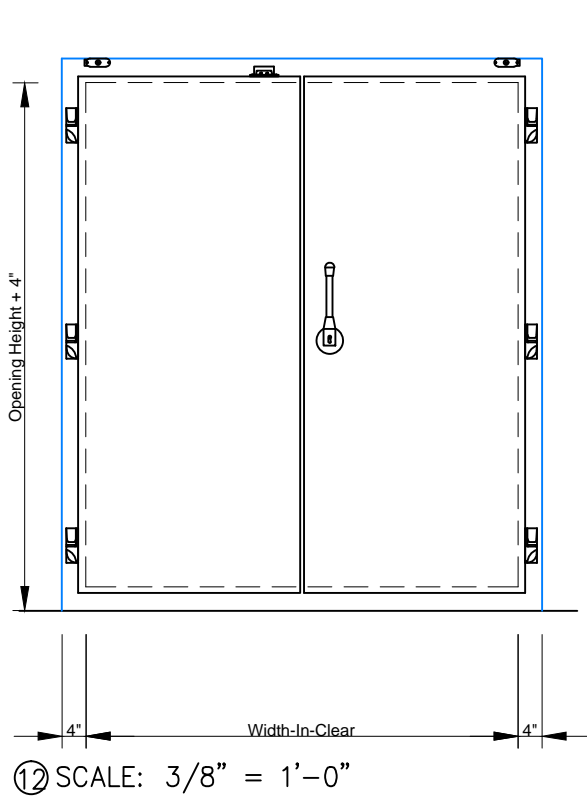
**Model EFD-DSD-1**

Bullet Hinges

Rotary Compression Latch with Multi-Point Latching



ALL DRAWINGS ARE 3/8" = 1'-0" SCALE UNLESS OTHERWISE NOTED

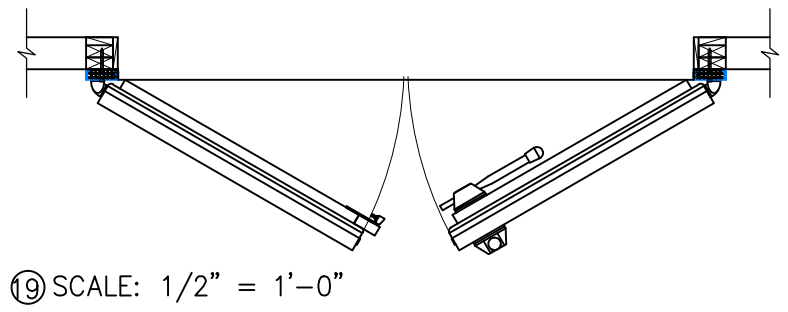
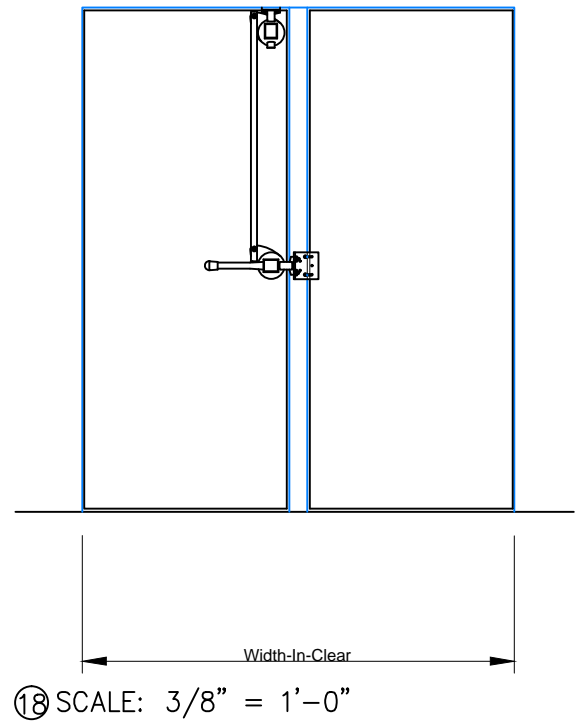
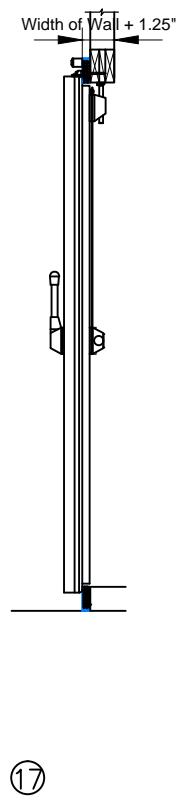
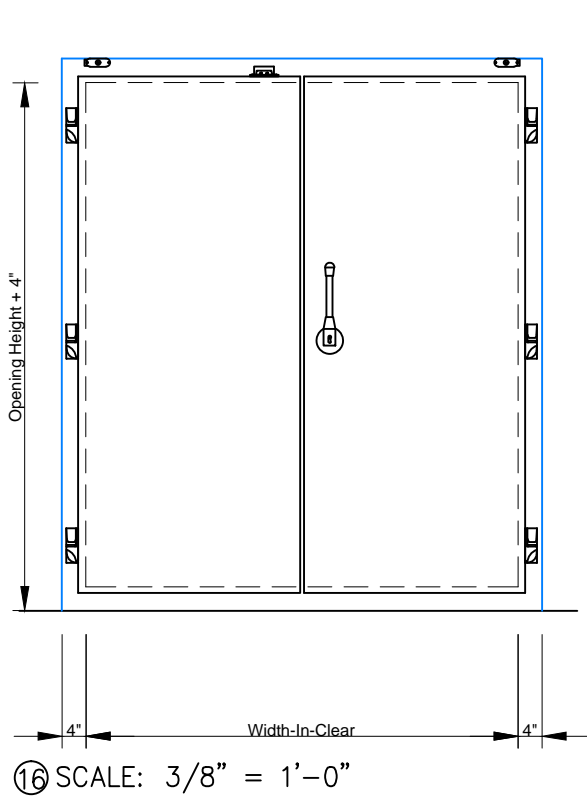


- ⑫ ELEVATION – STEP OVER SWING DOORS (EXTERIOR)
- ⑬ SECTION – STEP OVER SWING DOOR
- ⑭ ELEVATION – STEP OVER SWING DOORS (INTERIOR)
- ⑮ JAMB – DOUBLE SWING DOORS

STEP OVER - Page 3/4  
**Double Swing Doors with Face Casings**  
**Model EFD-DSD-1**  
 Bullet Hinges  
 Rotary Compression Latch with Multi-Point Latching



ALL DRAWINGS ARE 3/8" = 1'-0" SCALE UNLESS OTHERWISE NOTED



- ①⑥ ELEVATION – HIGH SILL SWING DOORS (EXTERIOR)
- ①⑦ SECTION – HIGH SILL SWING DOOR
- ①⑧ ELEVATION – HIGH SILL SWING DOORS (INTERIOR)
- ①⑨ JAMB – DOUBLE SWING DOORS

HIGH SILL - Page 4/4  
**Double Swing Doors with Face Casings**  
**Model EFD-DSD-1**  
 Bullet Hinges  
 Rotary Compression Latch with Multi-Point Latching



ALL DRAWINGS ARE 3/8" = 1'-0" SCALE UNLESS OTHERWISE NOTED